

Testing for
COVID-19

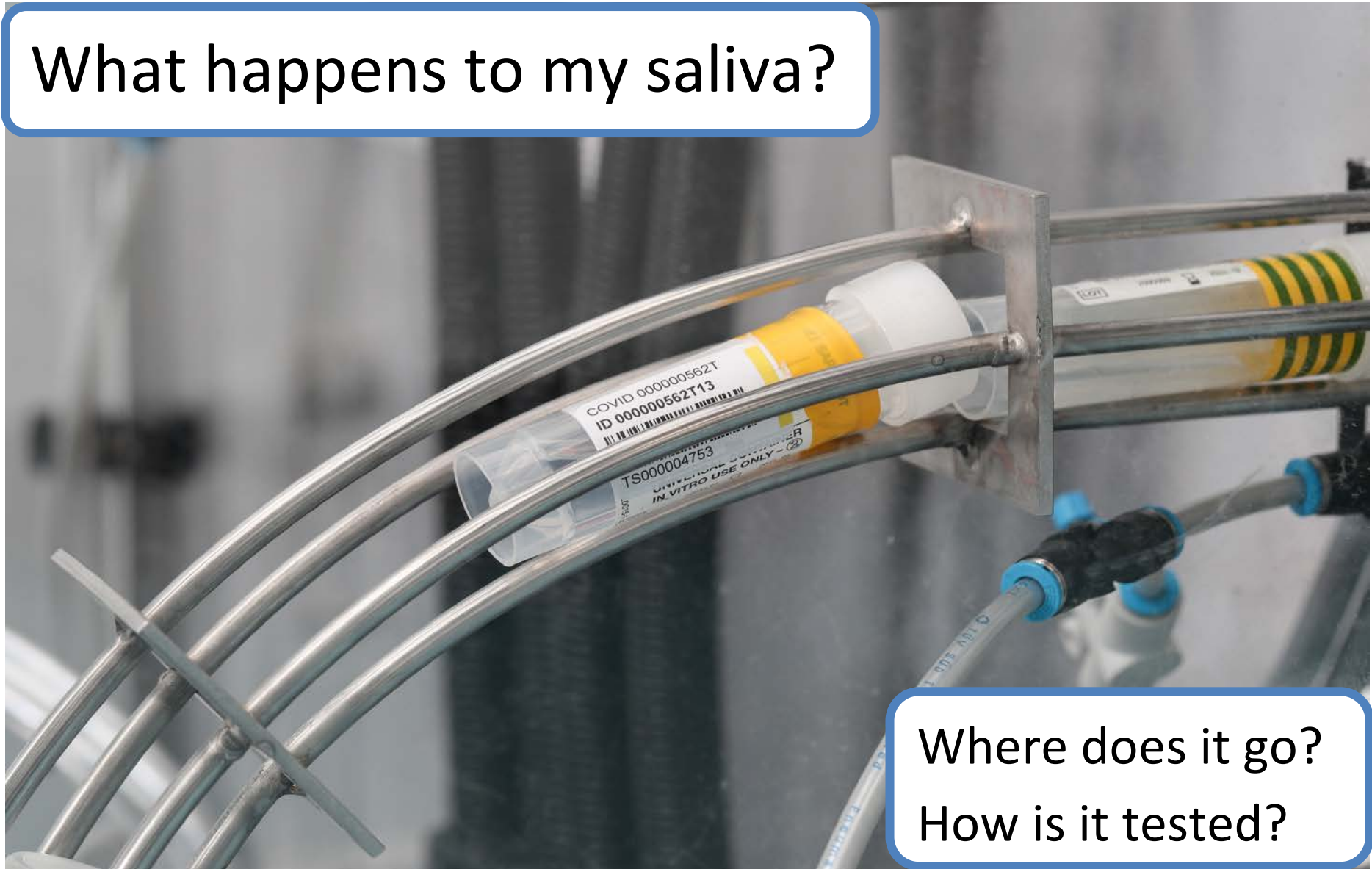


SEND resource pack

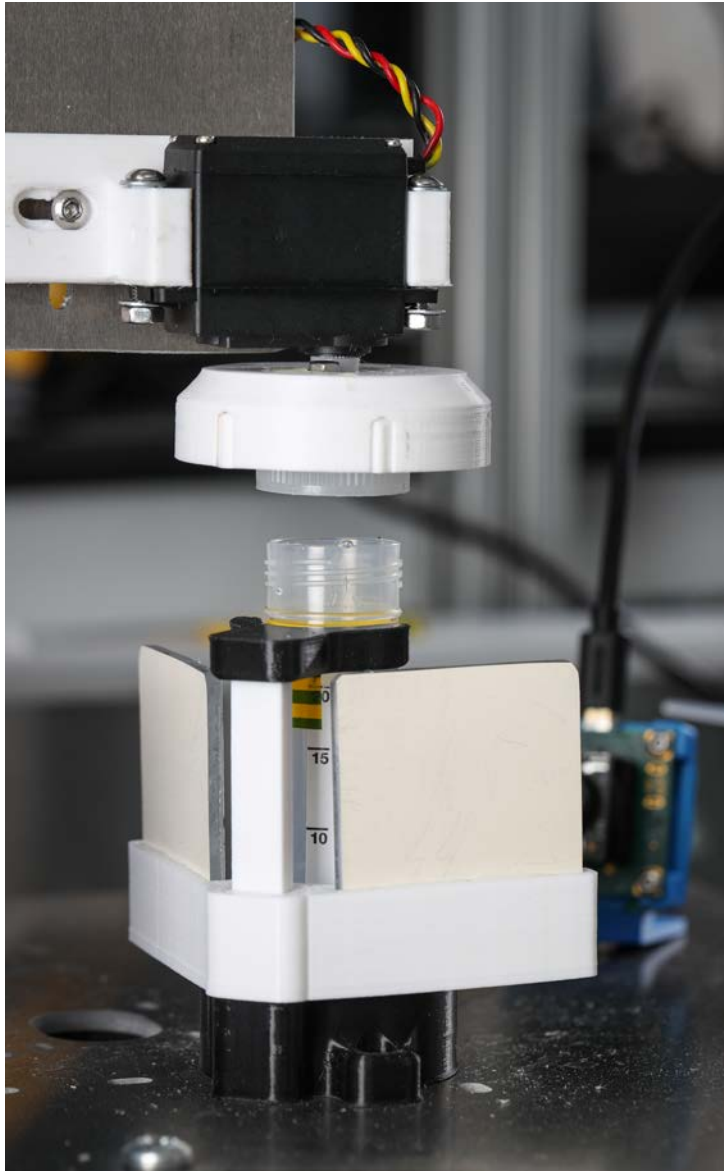
Social Story

Testing at the Lab

What happens to my saliva?



Where does it go?
How is it tested?



This story is about how your saliva is tested for Coronavirus. You will see the people and robots that test your saliva and that are helping keep us safe.

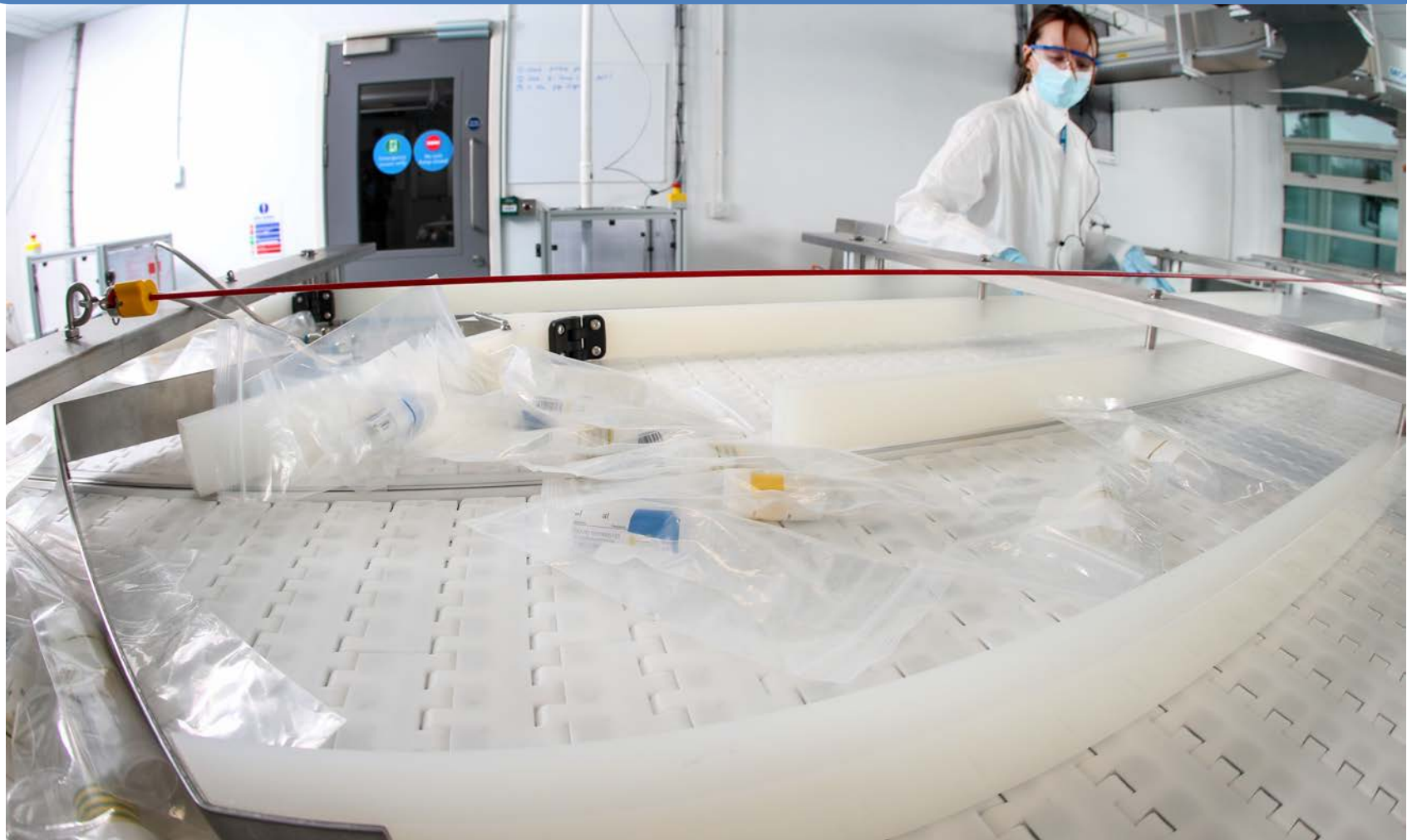


Saliva testing is important because it allows us to see who has Coronavirus and who does not. If we know who has Coronavirus it means we can help them quickly to get better and isolate. It also means we can stop Coronavirus spreading to another person.

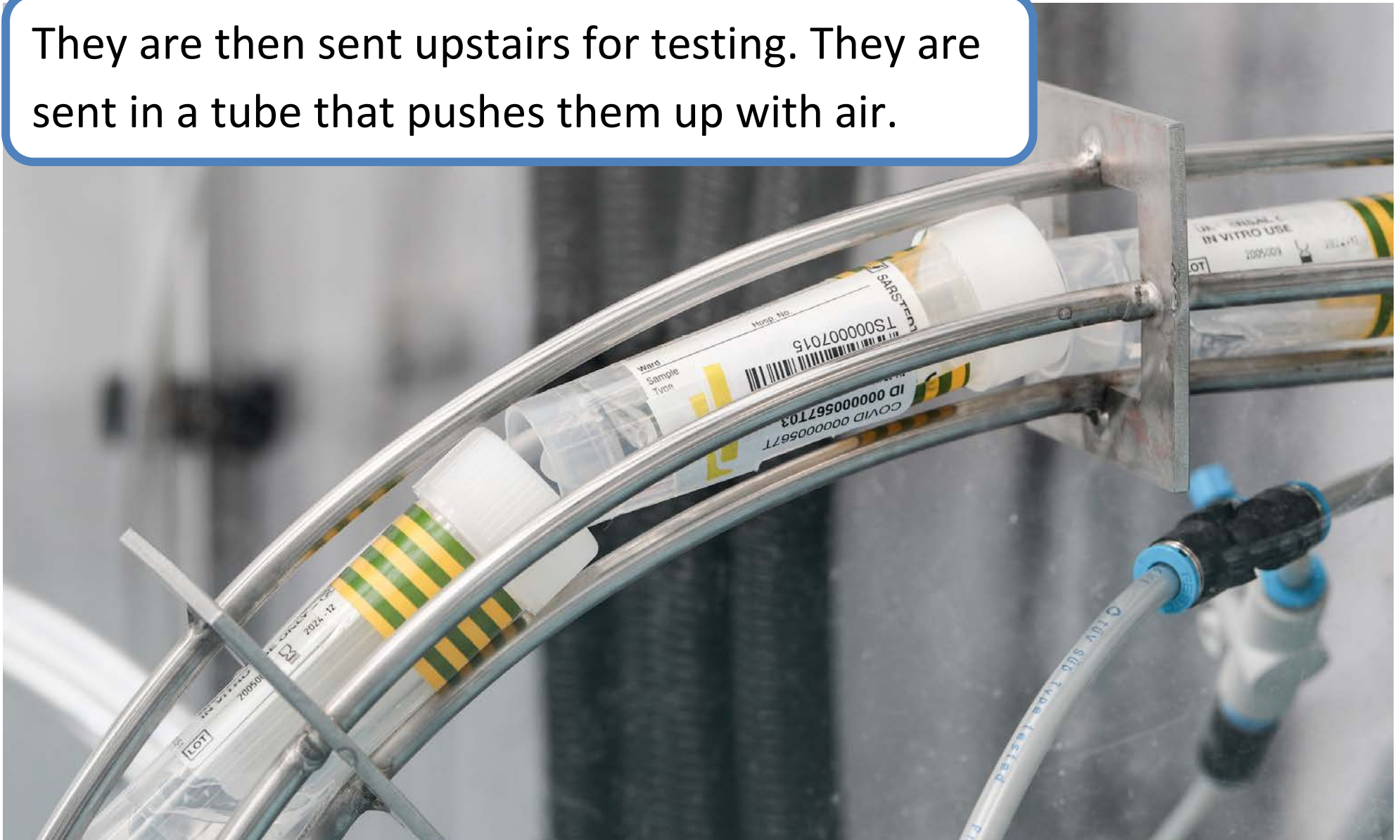
The collection boxes will be collected from school by a courier. It is their job to take the saliva samples to the lab for testing.



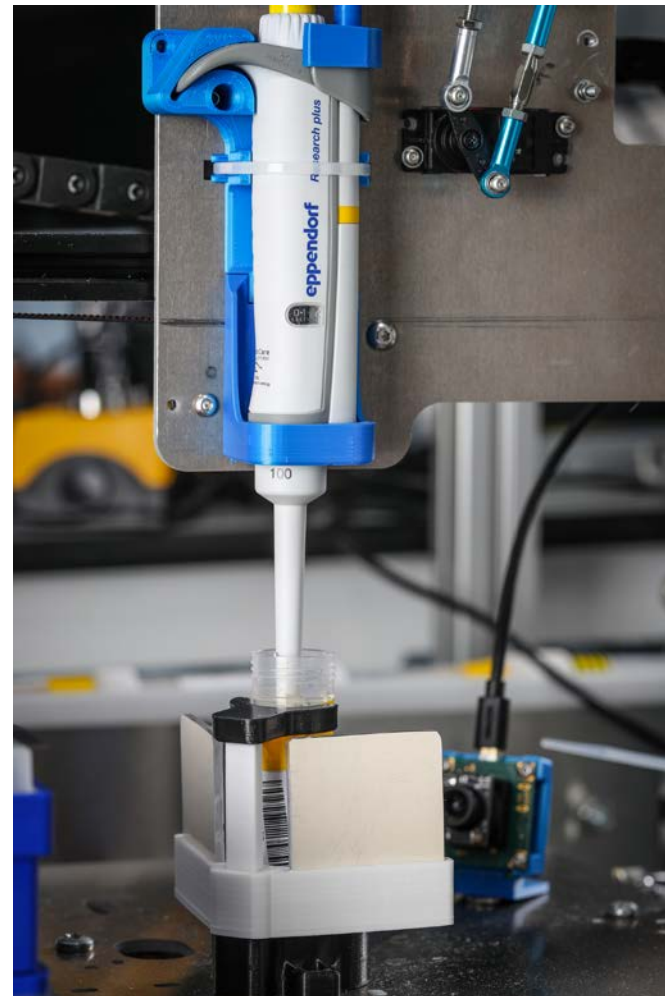
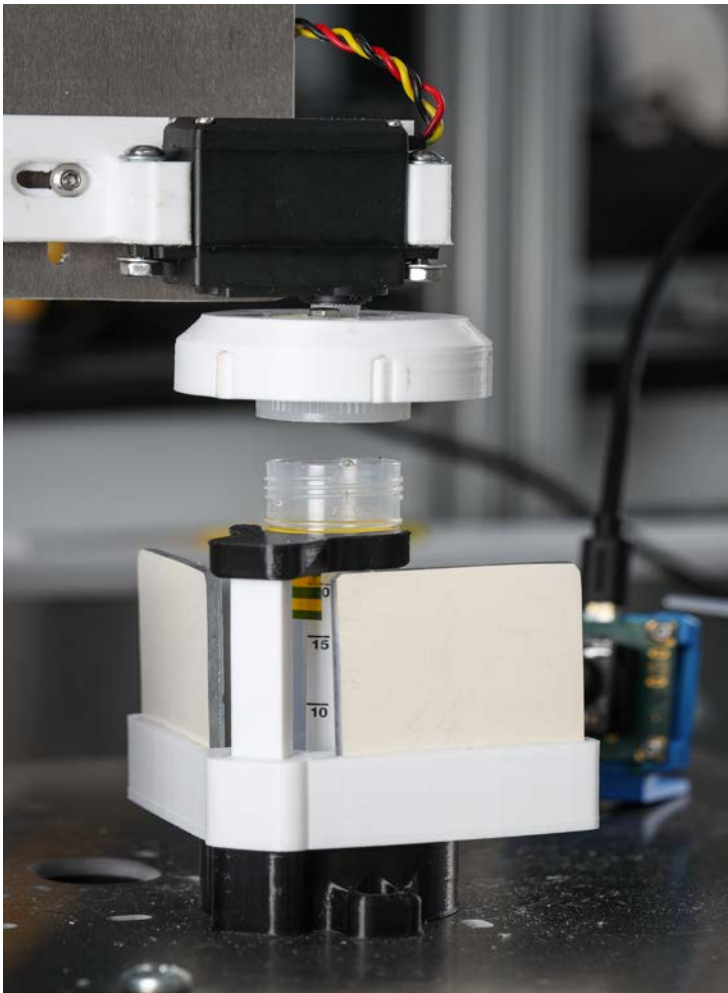
When the samples arrive, they are put on a moving platform that takes them around the lab. First, they are sorted and the labels are scanned so we know whose saliva is being tested.



They are then sent upstairs for testing. They are sent in a tube that pushes them up with air.



When they are upstairs, two robots prepare them for testing. The first robot takes the lid of the pot and the second sucks out the saliva.





The robot then divides the saliva into lots of small tubes. It is these small tubes that will be tested.

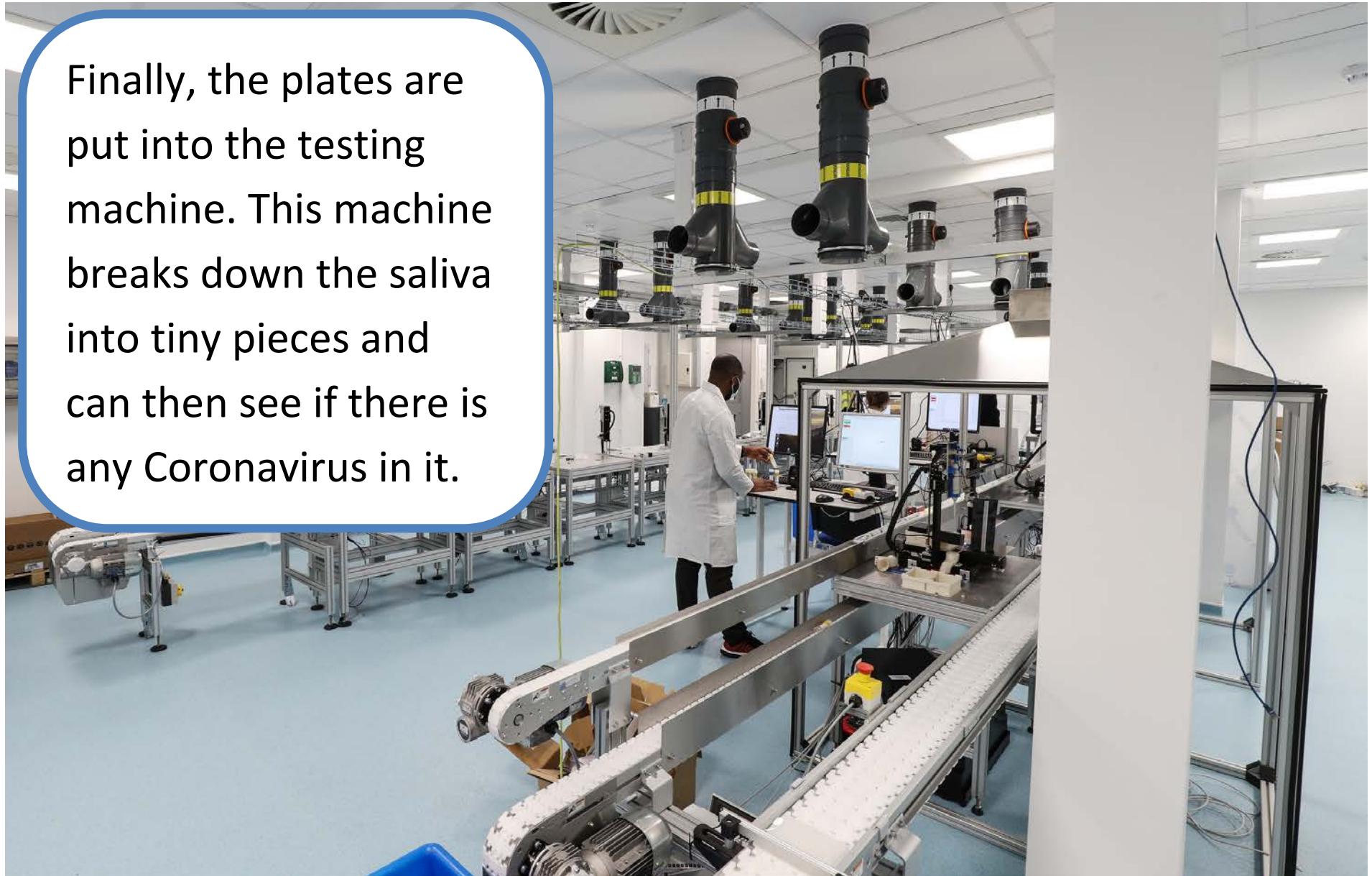
A third robot then seals these small tubes into what are called plates. These plates go into the machine that breaks down the saliva and tests it for Coronavirus.



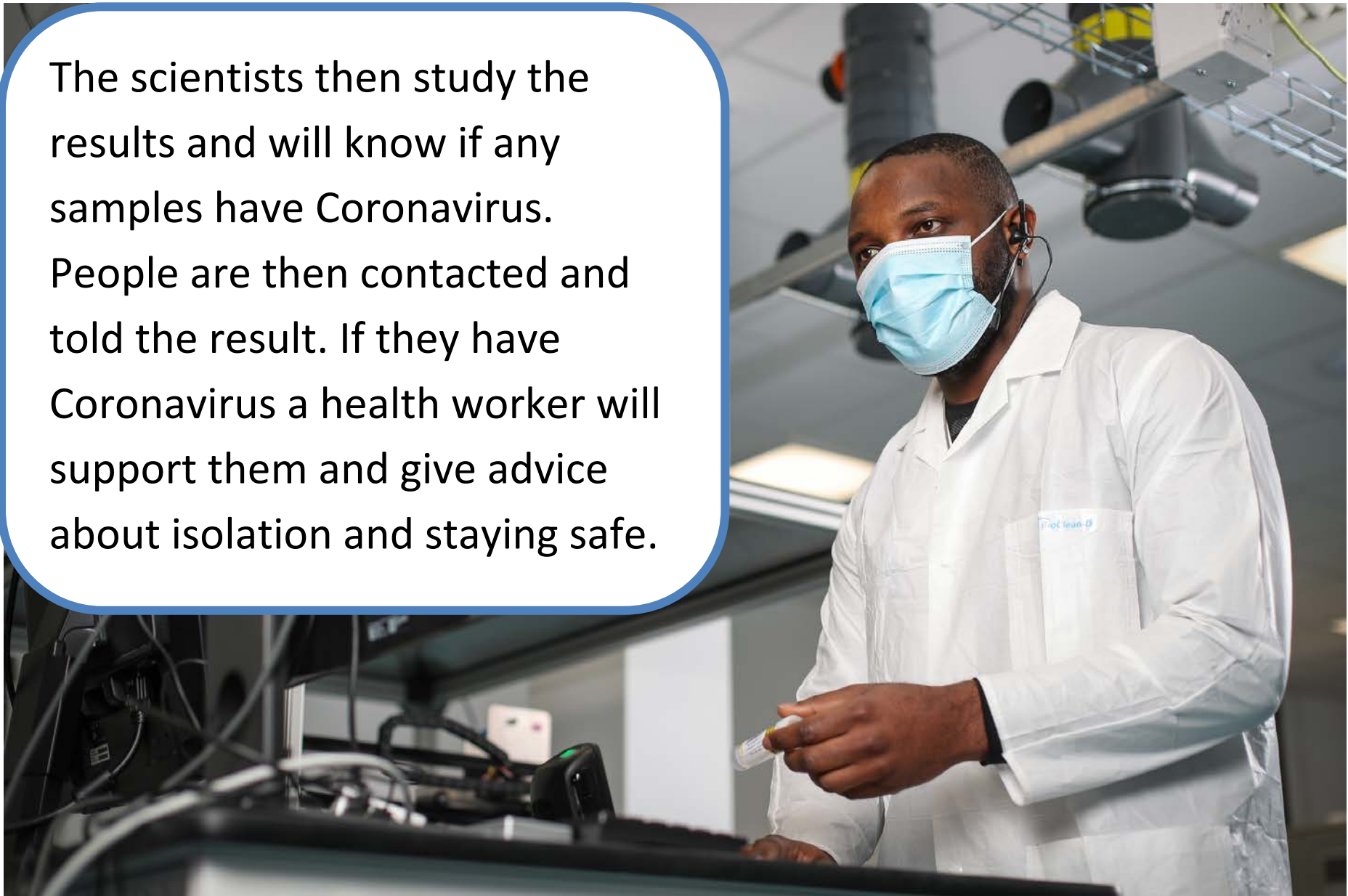


These robots work much faster than people. That means that thousands more tests can be done every day. This means more people can get tested and we can help keep more people safe.

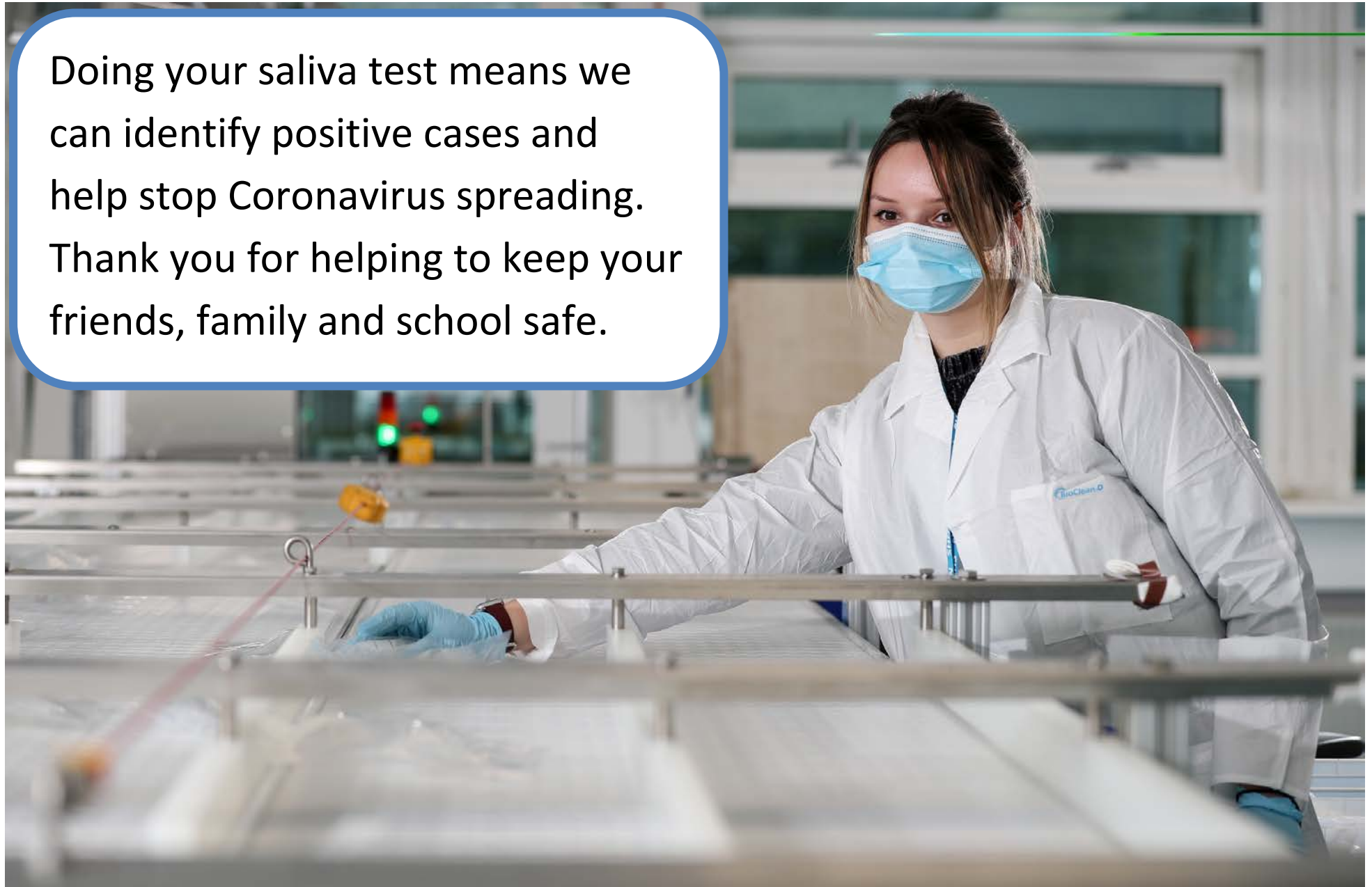
Finally, the plates are put into the testing machine. This machine breaks down the saliva into tiny pieces and can then see if there is any Coronavirus in it.

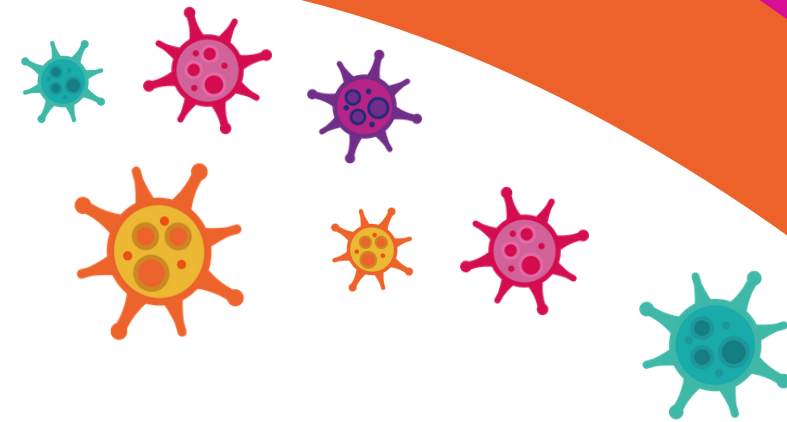


The scientists then study the results and will know if any samples have Coronavirus. People are then contacted and told the result. If they have Coronavirus a health worker will support them and give advice about isolation and staying safe.



Doing your saliva test means we can identify positive cases and help stop Coronavirus spreading. Thank you for helping to keep your friends, family and school safe.





Resources co-created with and from an original concept by LifeLab, based at the University of Southampton, Southampton Education School and NIHR Southampton Biomedical Research Centre. The views expressed are those of the authors and not necessarily those of the NIHR, or the Department of Health and Social Care.