

Testing for  
COVID-19



SEND resource pack

Flashcards

Saliva Testing

# Saliva Testing



saliva



teaspoon



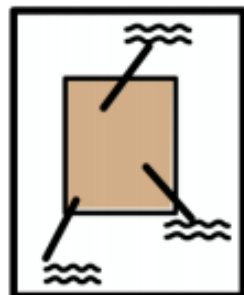
pot



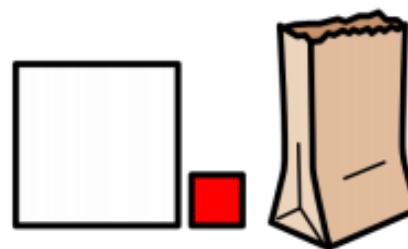
absorbant  
material



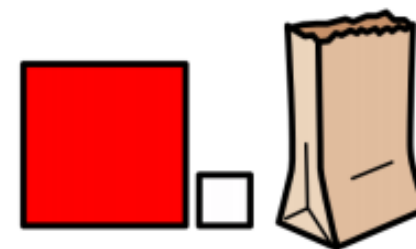
wash hands



label



small bag



large bag



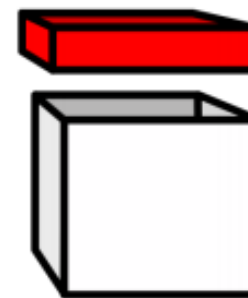
spit



unscrew



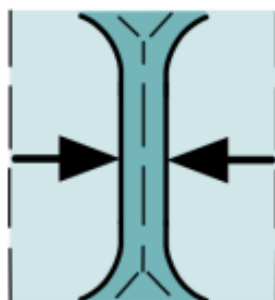
screw



lid



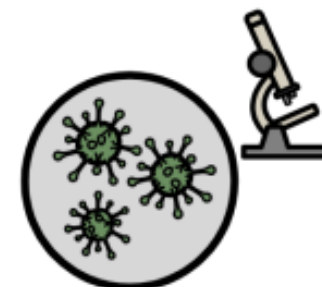
seal



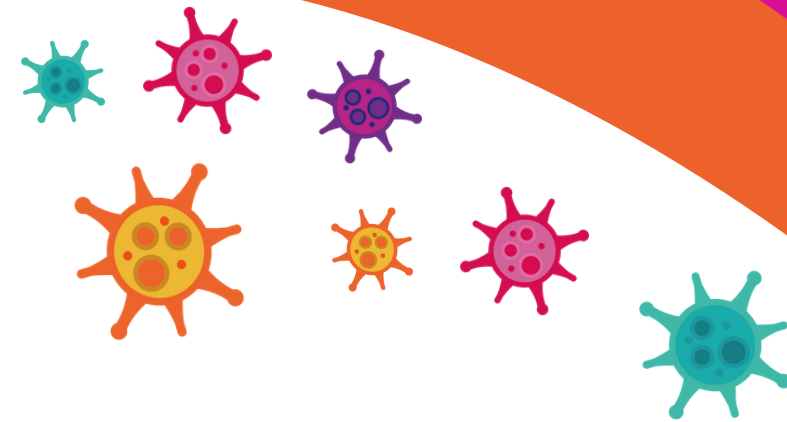
tight



safe



test



Resources co-created with and from an original concept by LifeLab, based at the University of Southampton, Southampton Education School and NIHR Southampton Biomedical Research Centre. The views expressed are those of the authors and not necessarily those of the NIHR, or the Department of Health and Social Care.